

Product Name	Confidentiality level
mToken Cryptoid	
Product version	
V2.2.17.224	

mToken CryptoID User Manual



Century Longmai Technology Co., Ltd.

All rights reserved

Revision Record

Date	Revision Version	Sec No.	Change Description	Author
2015/02/02	V1.0		Initial Version	Longmai ITD
2018/01/05	V1.0		Revised Version	Rachel

Contents

1. MTOKEN CRYPTOID PRODUCT OVERVIEW	3
1.1 CURRENT SITUATION	3
1.2 CHALLENGE.....	3
1.3 CENTURY LONGMAI SOLUTION.....	3
2. MTOKEN CRYPTOID CERTIFICATE UTILITY.....	4
2.1 BASIC FUNCTIONS	4
2.2 BASIC OPERATIONS	4
2.2.1 Token Parameter Review.....	4
2.2.2 Change User PIN.....	5
2.2.3 Change Token Name.....	5
2.2.4 Certificates.....	6
2.2.4.1 Import certificate	6
2.2.4.2 Delete container.....	8
2.2.4.3 View Certificate.....	8
2.2.5 Remote Unlock	8
2.2.6 System Information	10
2.3 EXTRA FUNCTIONS	11
ABOUT CENTURY LONGMAI.....	12



1. mToken CryptoID Product Overview

1.1 Current Situation

Today's world is increasingly getting connected due to rapid development in information and internet technology industry, peoples' work, study and life-style is changing greatly and growing more efficiency; meanwhile, E-Commerce, E-Government, Digital Currency, E-Banking, financial and retail sectors are accelerating utilization of digital information resources every day.

1.2 Challenge

On the other hand, network security issues are prominently increasing; whereas in traditional process of network security authentication, "username + password" authentication method is used frequently, this kind of strategy is easy but insecure.

1.3 Century Longmai Solution

Meanwhile PKI systems and network security technology based on portable hardware is a new and trending development in digital security to ensure data privacy, confidentiality and availability. Embedded with secure element and smart card chip technology, Century Longmai's mToken CryptoID is a PKI USB authenticator utilizing CCID drivers for highly robust authentication and verification deployments across multi-industry. The CCID drivers work to protect the USB connection and are therefore less susceptible to packet sniffing thus providing stronger authentication.

The mToken CryptoID product could be seamlessly integrated with the exiting PKI applications, like Web, E-mail, VPN, Windows Smart card logon, etc. The end users of mToken CyrptoID benefit from driverless Plug & Play operations (without need to manually install any software), which allows for unproblematic yet secure verification of users in web services, E-mail protection, VPN login, Windows smartcard logon for both network and local based authentication.



2. mToken CryptoID Certificate Utility

mToken CryptoID Certificate Utility is an easy to operate GUI application used to conveniently manage mToken CCID device.

Please run ***cryptoid_setup.exe*** to install, after installation the mToken CryptoID Certificate Utility tool will be found in your system.

2.1 Basic Functions

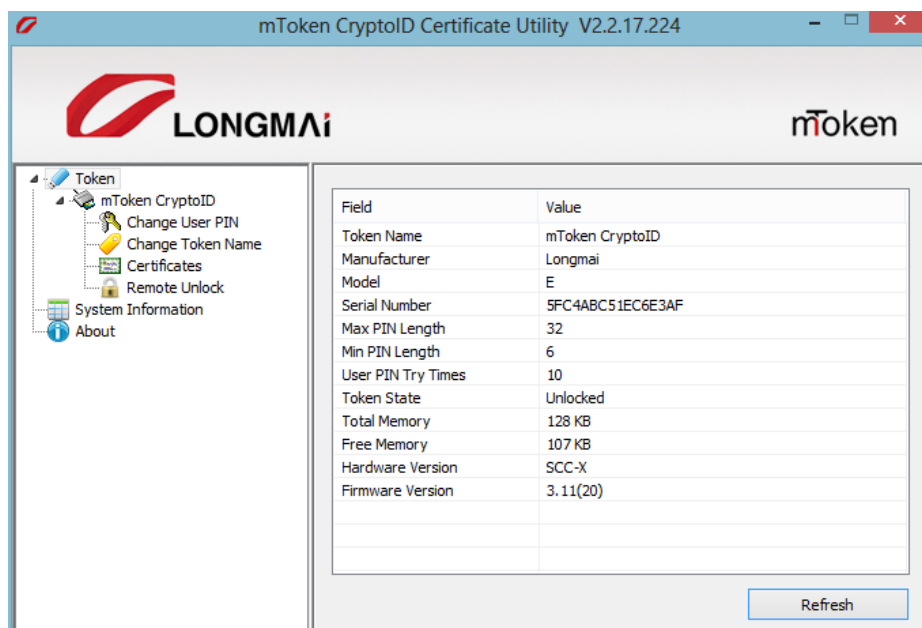
mToken CryptoID Certificate Utility's functions include:

1. Change User PIN
2. Change Token Name
3. Import / delete / view certificates
4. Remote Unlock

2.2 Basic Operations

2.2.1 Token Parameter Review

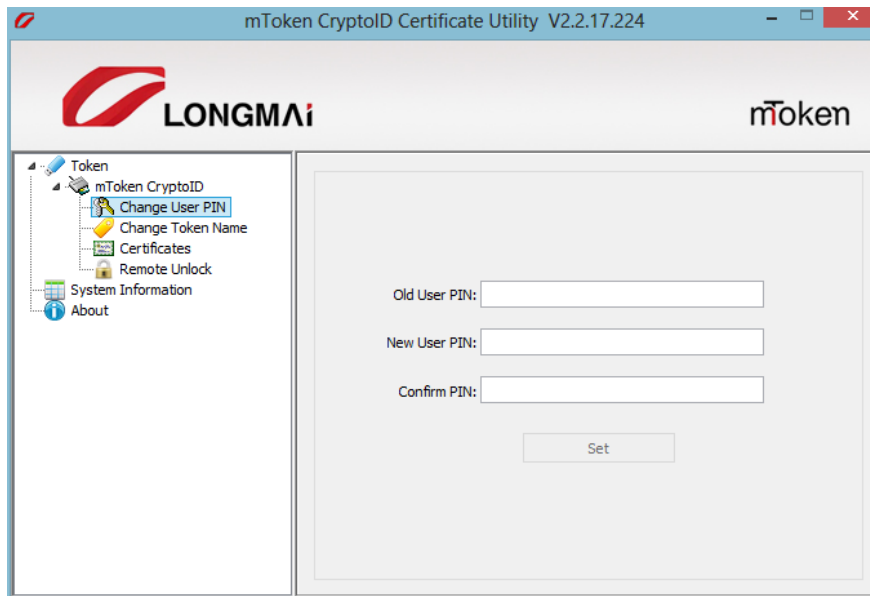
1. Open mToken CryptoID Certificate Utility, all the connected devices will be auto-detected and listed in the left Panel.
2. Then select a device name, detailed information about connected token will be shown in the right Panel.



2.2.2 Change User PIN

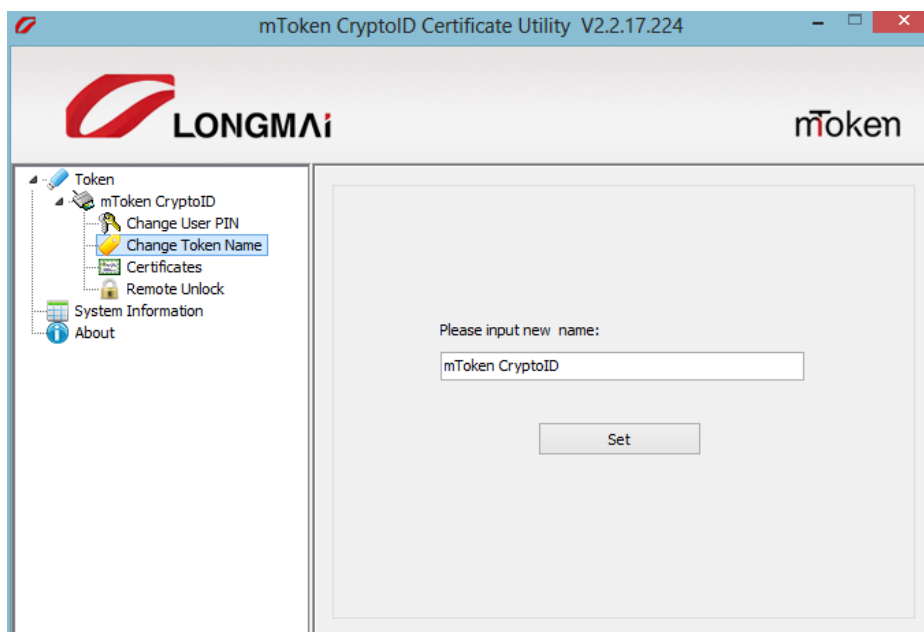
To change User PIN:

1. Select **Change User PIN** in the left tree.
2. Input the old User PIN.
3. Input a new User PIN and a confirm PIN.
4. Click **Set**.



2.2.3 Change Token Name

To change the token's name, select Change Token Name in the left tree and input a new name in the dialog box, click **Set** to save changes.

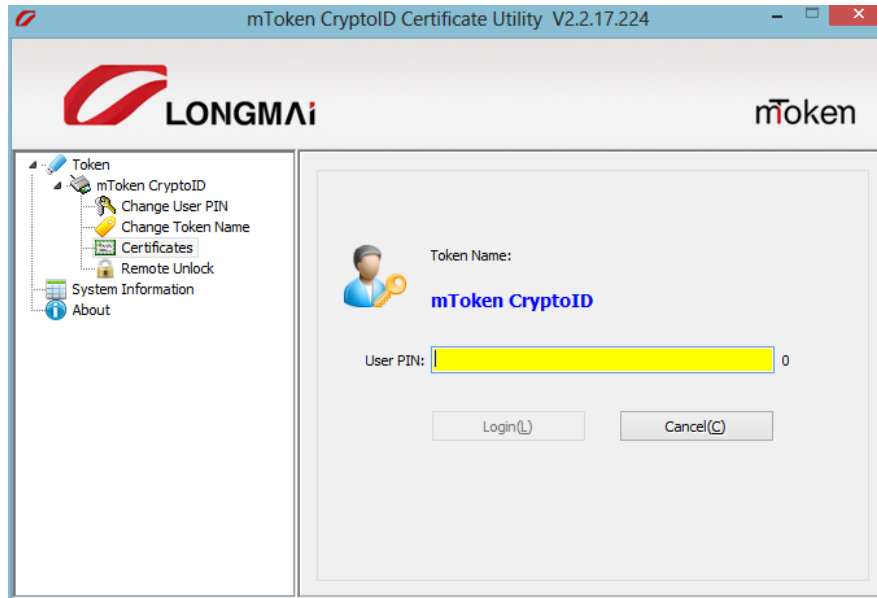


2.2.4 Certificates

2.2.4.1 Import certificate

To import certificate into the mToken CryptoID, perform the following operations:

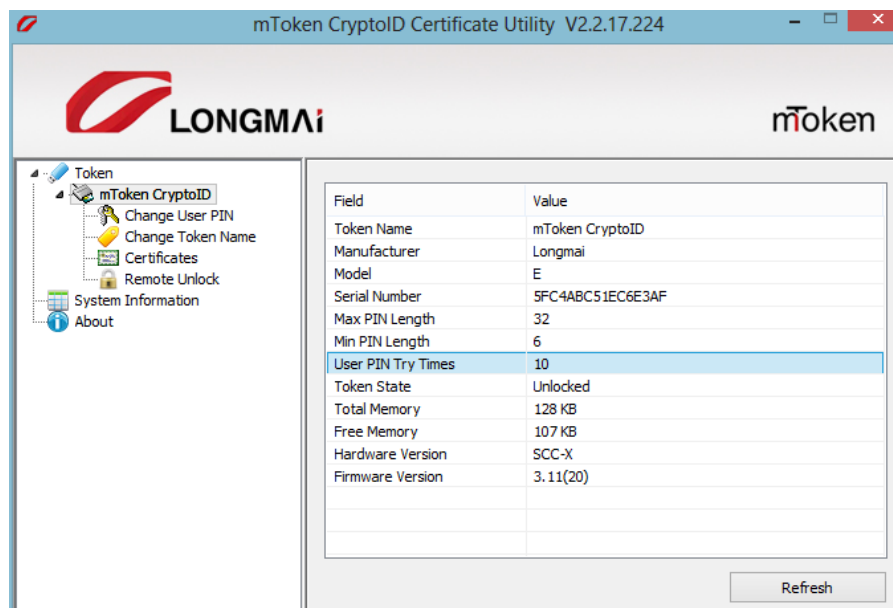
1. Select Certificate in the left tree and input correct User PIN. (Default value is 12345678)



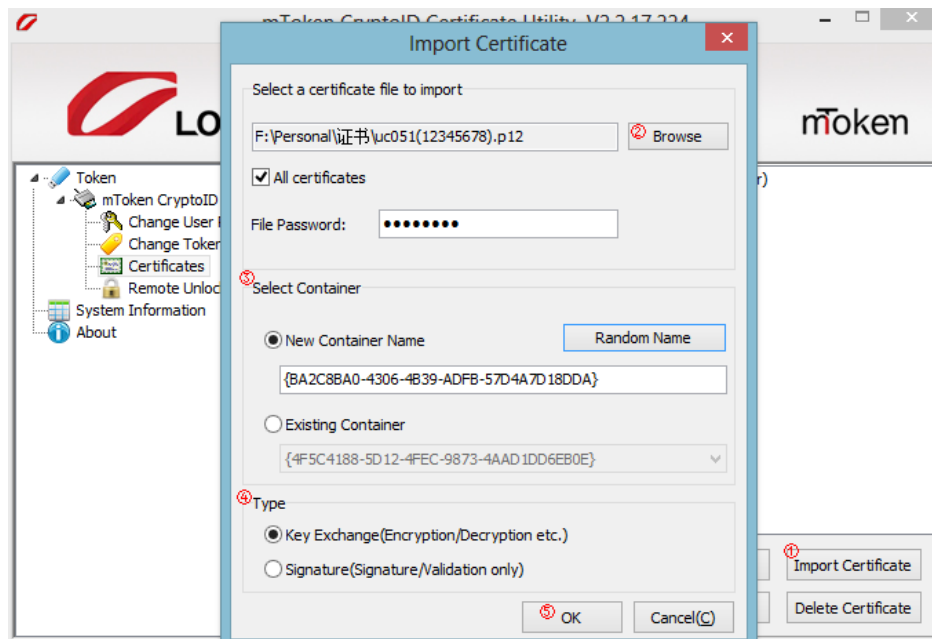
Note: The token will be locked after ten times wrong PIN input. In this case, user has to contact the admin manager to unlock it.

The remaining trials are independent of reconnection and time, but will restore to default value after successful PIN verification.

User can check the **User PIN Try Times** by clicking the device name in the left tree.

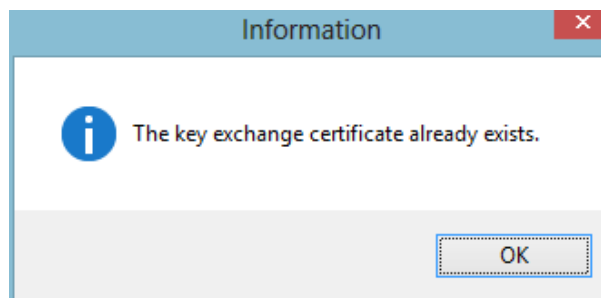


2. Click **Import Certificate**.
3. Click **Browser** to select a certificate.
4. Input its correct password if needed.
5. Select New Container Name (manually input a name or use an auto-name by clicking Random Name button), or select Existing Container (choose from drop-down list)
6. Select the type of the key.
7. Click **OK** to import the key.



Note: A container can contain up to two certificates, but must be different types, for example, if the first one is Key Exchange certificate, the second one must be Signature certificate, vice versa.

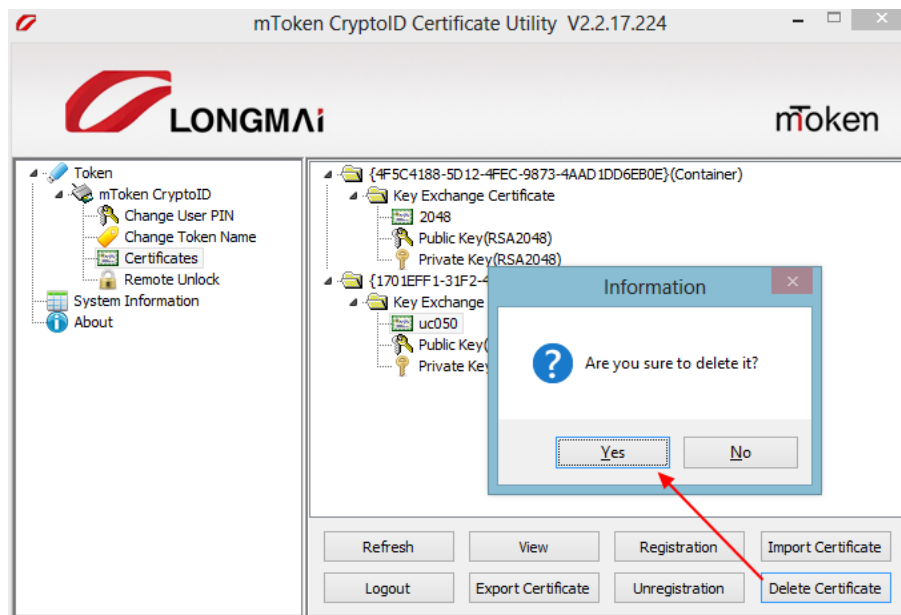
Importing a certificate which type already existed in the same container, below window will pop up.



If importing a different type of certificate, the importation can execute successful.

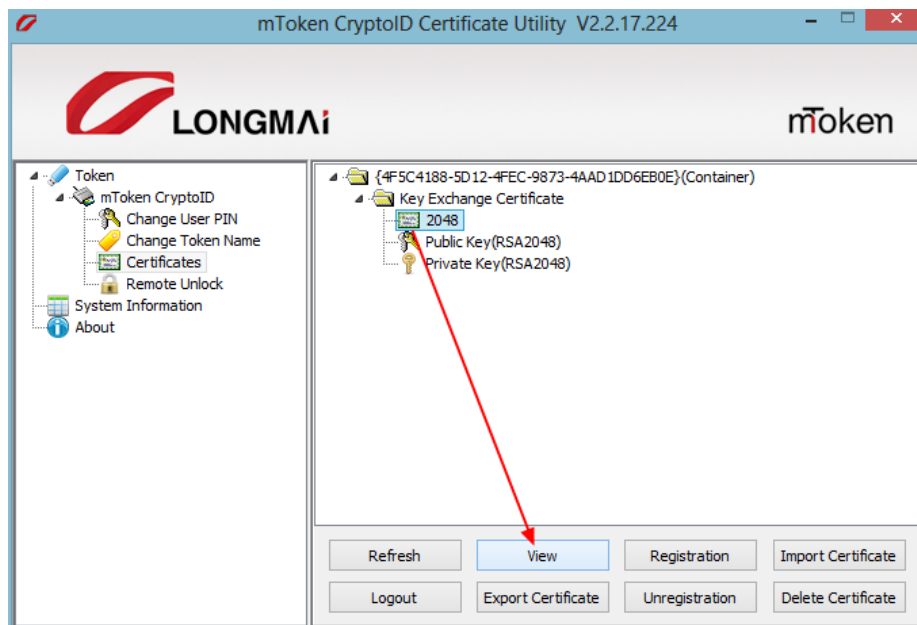
2.2.4.2 Delete container

Select a certificate and click **Delete Certificate**



2.2.4.3 View Certificate

Double-click the certificate **2048** or click the **View** to view the detail info of the certificate (as seen below)

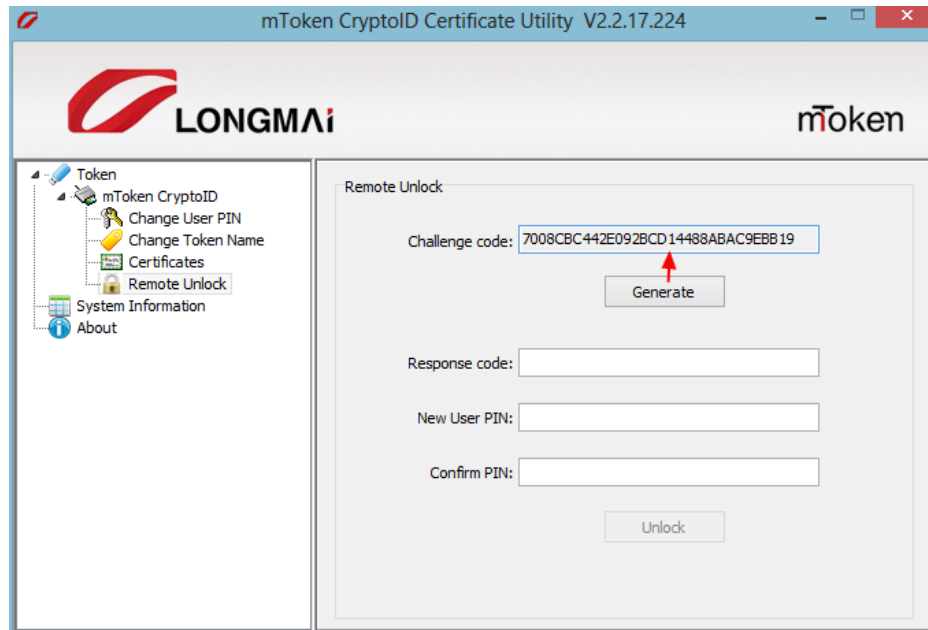


2.2.5 Remote Unlock

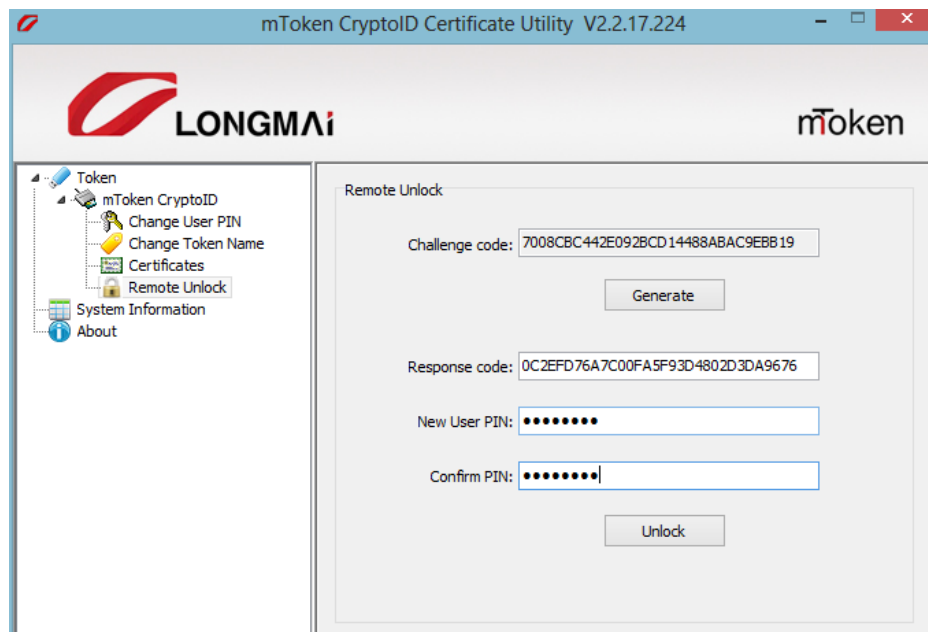
When CryptoID is locked because of over ten times wrong User PIN input, user need to unlock the token remotely with following steps:



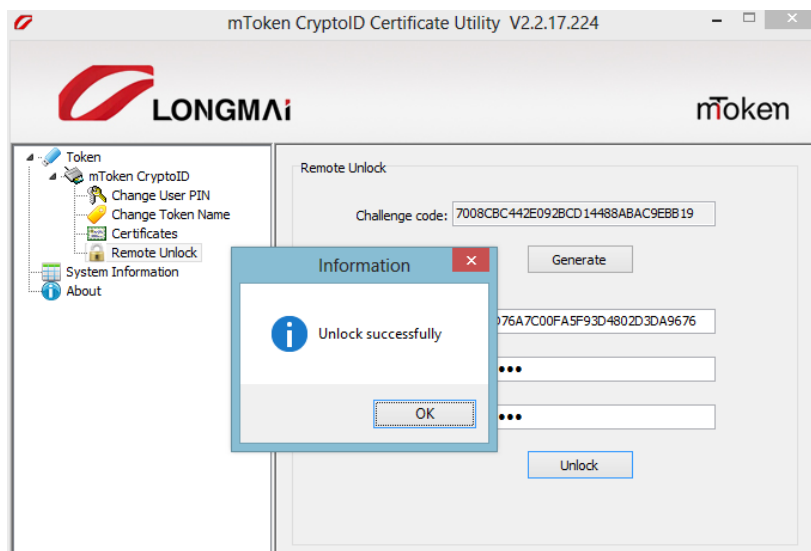
1. Select **Remote Unlock**
2. Click **Generate**, a code will be shown in the Challenge code



3. Send this challenge code to your Admin Manager (Who gives token to you)
4. Wait Admin Manager send response code to you
5. Input the received response code, input new User PIN and confirm it

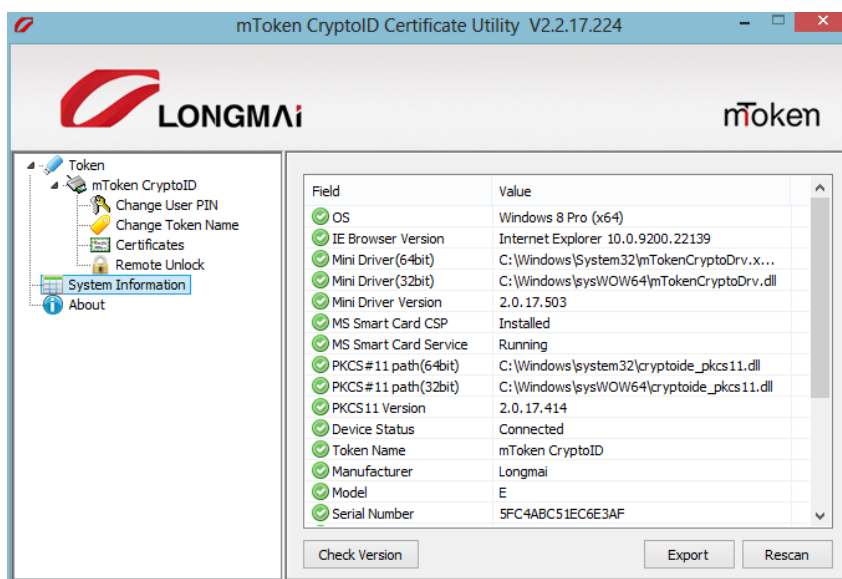


6. Click **Unlock**



2.2.6 System Information

The system information is displayed when click the System Information item from the utility.



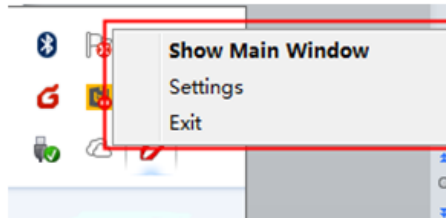
The **Rescan** could be used to rescan the system and the **Export** could export the system information into a txt file for diagnosis.

The **Check Version** is for new version detection, if there is new version middleware released, this button could help the end user upgrade to it easily.



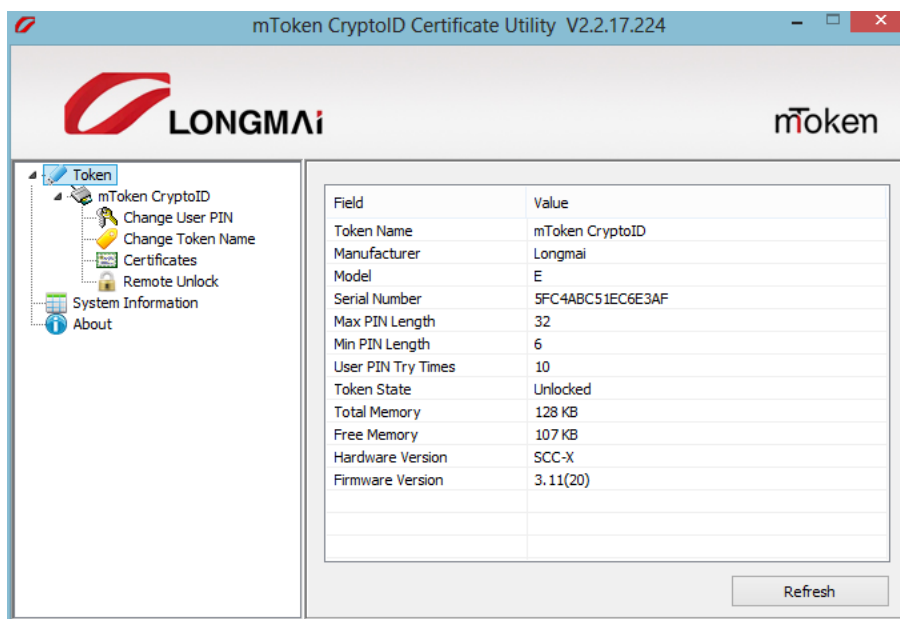
2.3 Extra Functions

If your system already installed mToken CryptoID Middleware, the mToken CryptoID tray icon will display when connecting mToken CryptoID to PC.

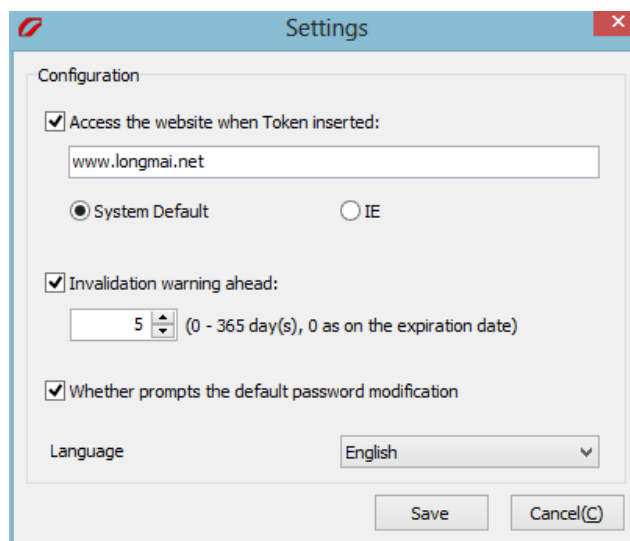


Right-click the tray icon to display the three functions shown in figure above.

- ① **Show Main Window** --- Click to start Certificate Utility.



- ② **Settings** --- Click to configure URL and warning period for expired certificate.



- ③ **Exit**--- Click to close Certificate Utility.



About Century Longmai

Established in 2003, Century Longmai Technology Co., Ltd is one of the most leading information security device vendors in China with over 12 years' experience developing latest generation of digital security solutions and products for secure information access and transmission. Our product portfolios include PKI dongles, wireless PKI tokens, OTP tokens, smart card, smart card readers, electronic document protection solution, software license dongles, Smartcard readers and OEM services. Proved to be secure and convenient, our solutions and products are dedicated to help customers build safe, efficient and sustainable networks, financial systems and enjoy secure access to data and information everywhere whenever they want.

Century Longmai Technology Co., Ltd

3/F, Gongkong Building, No.1 Wangzhuang Rd, Haidian District, Beijing, P.R China 100083

Postcode: 100083

Tel: (86) 10-62323636 | Fax: (86) 10-62313636

Sales E-mail: info@longmai.net | Support E-mail: support@longmai.net

Website: <http://www.longmai.net>

